



Celebrating
4 **Kentucky
Wood Expo** *Years*

September 15 - 16, 2023
Masterson Station Park



Nobody Works Harder.™



Lexington

859.263.2771

505 Wellington Way
Suite 350
Lexington, KY 40503



Nashville

615.261.1900

109 International Drive
Suite 101
Franklin, TN 37060



Bowling Green

270.781.2020

1240 Fairway Street
Bowling Green, KY 42103



Owensboro

270.685.5581

2009 Frederica Street
Owensboro, KY 42302



Houchens Insurance Group is the right choice for your forestry business.

As the exclusive endorsed agent of the Kentucky Forestry Association, we provide a complete range of insurance products.

- Insurance - property, liability, auto, bonds, and workers' compensation
- Risk Service - claim management, regulatory compliance, training, and loss prevention
- Employee Benefits - plan design, consulting, and program implementation

Welcome to the 2023 Kentucky Wood Expo!



The Kentucky Forest Industries Association, (KFIA) sponsor of the Kentucky Wood Expo, in cooperation with the University of Kentucky Department of Forestry Extension and VisitLex extend to you a hearty welcome to our thirty fifth show. We are excited to return to Masterson Station Park in Lexington, KY and celebrating 40 years of the Kentucky Logging Show as it was originally named in 1983. A number of activities have been planned for all members of the family to enjoy.

Volunteers from KFIA and the wood industry community have worked throughout the year to prepare this show to welcome visitors from throughout the Commonwealth of Kentucky and all parts of the United States.

This is the official program for the Kentucky Wood Expo and contains schedules of many different kinds of events, which are planned for the weekend. We have included photographs of highlights from previous shows.

The Kentucky Wood Expo has earned a reputation as one of the best regional trade shows to showcase the latest in technology and information for the forest products industry in Kentucky. It has also been voted one of the top ten tourism events by the Kentucky Tourism Council. The wood products industry directly employs over 26,000 people in Kentucky. Thank you for your support.

Again, the Kentucky Forest Industries Association extends a heartfelt welcome to each one who attends the 35th Kentucky Wood Expo. We hope you enjoy the many booths and attractions. If you have any questions about activities at the show, please stop by the KFIA information tent located in between the inside exhibit buildings or look for expo staff wearing blue t-shirts. Have a safe and enjoyable weekend!

Wood Industry Helps Kentucky's Children



Don't forget to check out the silent auction items in Building 2. Proceeds benefit Log A Load for Kids and the Kentucky Childrens Hospital. Bidding will take place both days and will close on Saturday at 2:30 p.m. Everyone is welcome to participate.

- Introducing -

KENTUCKY'S TOTAL SOURCE FOR FORESTRY EQUIPMENT SOLUTIONS:

ENCON

EQUIPMENT SALES AND RENTAL

Every brand you want, any way you want it.

SALES • RENTALS • SERVICE

asv

DENIS CIMA

LOFTNESS

MAGNI
TELESCOPIC HANDLER



MORBARK

MONGO
ATTACHMENTS



RAYCO



YANMAR

Nicholasville

140 Hendren Way
Nicholasville, KY 40356

(859) 885-0708

Somerset

1695 S Hwy 27
Somerset, KY 42501

(606) 595-2066

Open 6 days a week | enconequipment.com

Get a FREE attachment!

Get a FREE attachment on your first day's rental. Come see us at booths 16 & 17 at the Kentucky Wood Expo or email us now to reserve:

sales@enconequipment.com

KY Wood Expo Schedule of Events*

Friday, September 15

9:00 a.m.

9:00 a.m. - 5:00 p.m.

9:00 a.m. - noon

Noon - 3:00 p.m.

Gates & Exhibits Open

Log A Load for Kids Silent Auction - Building 2

EKSAF and KACF Meeting - UK Forestry Educational Area

Critter Tent - UK Forestry and Entomology have a variety of critters available for "show and tell" including snakes, salamanders, mammal skulls, furs and bugs - UK Forestry Educational Area

High School Youth Forestry FFA Competition - Lumberjack Arena

Knuckleboom Contest - Booths 8 - 9

Horse Logging Demonstration - Booth 65

Forest Health Training - UK Forestry Educational Area

Create Your Own Cutting Board - Booths 66 & 67

Kentucky Lumberjack Games Invitational - Lumberjack Arena

Gates Close

10:00 a.m.

10:00 a.m. - 3 p.m.

12:00 p.m.

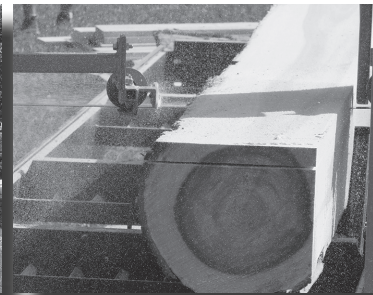
1:00 - 4:00 p.m.

1:30 - 5:00 p.m.

3:30 p.m.

5:00 p.m.

Hot Saw Demonstration featuring Mike Sullivan - Booth 19 - Times vary



Saturday, September 16

8:30 a.m.

8:30 a.m. - 2:30 p.m.

8:30 a.m. - 4:30 p.m.

8:30 a.m. - 4:30 p.m.

8:30 a.m. - 4:30 p.m.

10 a.m.

10 & 11 a.m. & Noon

Gates & Exhibits Open

Log A Load for Kids Silent Auction - Building 2

Create Your Own Cutting Board Workshop - Booths 66 & 67

Critter Tent - UK Forestry Educational Area

Tree and Wood Id Rubbings - UK Forestry Educational Area

Collegiate Lumberjack Competition (Conclave) - Lumberjack Arena

Small Scale Logging: Cutting and Moving Logs Using ATV's and Tractors - UK Forestry Educational Area

Knuckleboom Contest - Booths 8 - 9

Horse Logging Demonstration - Booth 65

Chainsaw Carving Competition LIVE Auction - Lumberjack Arena

Skidder Contest - Chainsaw Carving Area

Gates Close

10:00 a.m. - 3:00 p.m.

11:30 a.m.

12:30 p.m.

1:00 p.m.

4:30 p.m.

Hot Saw Demonstration featuring Mike Sullivan - Booth 19 - Times vary

*Schedule of events is subject to change.

Forest Health and Invasive Species

September 15 • 1 - 4 p.m. • UK Forestry Education Area

Learn about a wide range of forest health issues and their management with specialists from around the state. From insects to diseases to invasive plants, there are many threats facing our trees and management can be key to healthy forests in the future.

CEUs will be provided (KY Master Logger, KY Pesticide Applicator, KY SAF, KY Board of Landscape Architects, ISA, KERS CEUs are being sought)

Agenda

- 1:00-1:45 Tree Diseases in Kentucky Woodlands
Ellen Crocker, University of Kentucky
This session will review common tree diseases in Kentucky and management options.
- 1:45-2:30 Insect Invaders: A Deadly Threat to Kentucky Woodlands
Alexandra Blevins, Kentucky Division of Forestry
This session will review current insect pests and their impact to Kentucky forests as well as introduce emerging insect pests and why they would be unlucky for Kentucky and our precious forests.
- 2:30-3:15 Which Herbicide Should I Use to Control This Invasive?
Joe Omielan, University of Kentucky
This session will discuss herbicide selection when managing invasive plants, covering common invasive plants (and herbicides used) in Kentucky woodlands.
- 3:15-4:00 Scenarios for Effective Brush Management
Jody Thompson, Kentucky State University
This session will describe common challenges and opportunities with brush management.

Kentucky Lumberjack Games Invitational

September 15 • 3:30 p.m. - Lumberjack Arena



On Friday afternoon at 3:30 p.m. teams from across Kentucky and surrounding states will compete in an open forestry competition to see who has the best lumberjack team. We will also have some amateur lumberjacks on hand to assist and compete. They will be participating in cross-cut sawing, axe throwing, and stock chainsaw competitions.

The Kentucky Forest Industries Association and the Kentucky Wood Expo would like to thank **Bryan Equipment Sales (STIHL Inc.)** for providing the saws and assisting with the competitions.



Cutting Board Workshop

September 15 & 16 • UK Forestry Education Area

Come and create a cutting board! Participants in this workshop will receive a FREE beautiful hardwood cutting board made from locally grown Kentucky trees. Participants will router, drill, sand, and finish their board's onsite. While participating you will learn how important the wood industry is to Kentucky's economy. The cutting boards were donated by Kentucky Forest Industries Association members and the University of Kentucky Department of Forestry and Natural Resources. Go to booth #66 and 67.

September 15 - 1:30 - 5:00 p.m. & September 16 - 8:30 a.m. - 4:30 p.m.



Forestry Collegiate Conclave

September 15 • 10 a.m. - Lumberjack Arena

College students from universities in the southeast including the University of Kentucky will be competing in the 2023 Kentucky Wood Expo Collegiate Conclave.

The event is comprised of several events with both men's and women's competitions. Students compete in the underhand chop where they stand on top of a block of wood and chop through it with an axe (see photo); stock chainsaw competition - competitors make a cut down and then up through a 10" x 10" cant in only a 4" section without "cutting out" of that section. Students will also compete in axe and knife throwing which is similar to darts. Points are awarded for placement for all events to determine the overall team champion.



Small Scale Logging: Cutting and Moving Logs Using ATV's and Tractors/Horse Logging

Saturday, September 16 • 10 a.m., 11 a.m. & noon • UK Forestry Education Area

University of Kentucky Forestry Extension will host a presentation and demonstration on the basics of small scale logging for woodland landowners, farmers and other interested entrepreneurs. The presentation will include exposure to general practices and equipment demonstrations to help landowners safely and efficiently cut and move logs and firewood. These attachments can allow for management to occur on small acreage woodlands or in highly degraded stands, which otherwise may not be feasible for a commercial logging operation to work on.

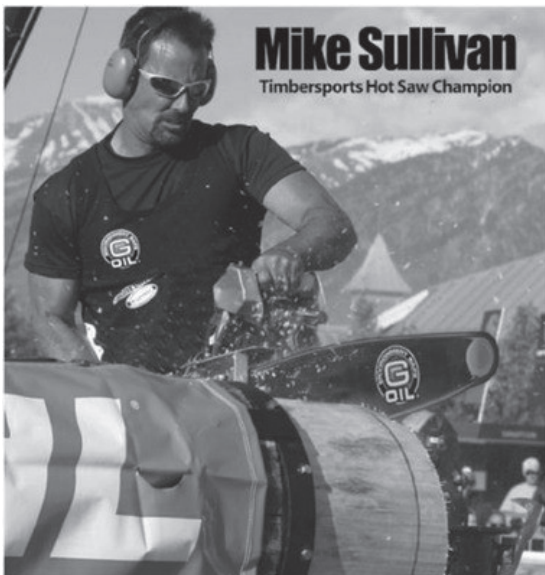
Demonstrations will include the use of an ATV/ Side-by-side mounted log skidding plate, log arches, a farm tractor log winch, and a grapple log loading trailer. Chainsaw safety, woodland tools and PPE will be discussed.

The program will be conducted three times for 1 hour each starting at 10 a.m., then 11 a.m. and again at noon.



Hot Saw Demonstration

Friday, September 15 and Saturday, September 16 • times vary

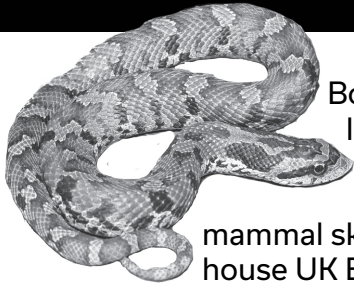


Mike Sullivan has FIVE World Titles in Hot Saw and is the current Hot Saw World Record Holder! He has 34 World Titles in Springboard Chop, Single Buck Saw, Double Buck Saw as well as Jack and Jill Sawing and has 120 titles overall!

Mike is a integral part of the Kentucky Master Logger program in which he demonstrates chain saw safety to the participants.

Visit Haix North America booth (#19) to see his hot saw demonstration.

Critter Tent



Both days, this hands on tent allows visitors to handle and gaze upon several nonvenomous, live amphibians and reptiles, and mammal skulls and furs. This tent will also house UK Entomology's insect and spider "petting zoo," featuring live tarantulas, scorpions, giant roaches, and other creatures. The Critter Tent will be an opportunity for people to get a close look at some very unusual creatures in a safe, educational environment.



September 15 - noon - 3 p.m. &

September 16 - 8:30 a.m. - 4:30 p.m. • UK Forestry Education Area

Chainsaw Carving Competitions

Chainsaw Carvers will be competing in a carving competition by designing the perfect piece to submit in a live auction Saturday, Sept. 16. The auction will be located in the arena at 12:30 p.m. with proceeds benefiting the Kentucky Children's Hospital in Lexington, KY.

Requirements: Carvers will provide at least one nice piece carved during show hours to be auctioned off in the lumberjack arena at 12:30 p.m. Saturday in a 50/50 split. The carving with the largest bid will be the winner of the competition with first place winning \$500, second place will get \$250.

Carvers competing are listed below.



TB Wooden Creations:
Troy Baker, Metamora, IN

Sherri Corn
North Manchester, IN

White Hills Carving Co:
Travis Plucinski, Seymour, TN

Derek Richardson Chainsaw Art:
Derek Richardson, Brandenburg, KY

Timbercrafts:
Tim Bonney, Seymour, CT

Fundi Universe:
Kiptoo Tarus, Lexington, KY



Log a Load for Kids, now in its 36th year, uses trees- America's green renewable resource to create miracles for sick and injured children. It is a fund raising opportunity for loggers, the forest industry community, and state forestry associations to work together to raise money for local Children's Miracle Network Hospitals. Log a Load has chapters in 30 states and has raised over \$49 million nationally.

One Hundred Percent of the money raised by Kentucky Log a Load stays in Kentucky and benefits the Kentucky Children's Hospital (KCH) located in Lexington, KY. Kentucky has contributed over \$875,000 to the children's hospital since the program started here in 1997.

The Kentucky Log a Load for Kids Committee raises funds through direct contributions from loggers, various fund raisers held by mills and the Kentucky Forest Industries Association throughout the year and a silent auction at the Kentucky Wood Expo. The program also provides gifts for the kids each year and participates in the pediatric cancer survivor picnic.

Funds contributed to Kentucky Log a Load have been used for a variety of projects at the hospital. Currently KCH is funding a Mobile Clinic that will travel to the kids and their families close to home. This mobile clinic will provide pediatric cardiology, specialty clinics, general pediatrics, mental health services and more to areas that are short of physicians and transportation to seek medical attention. One in four kids in Kentucky do not have a pediatrician in their home county. This clinic will travel to areas of the state that do not have the resources necessary to treat children.

The Kentucky "Log a Load for Kids" program is a volunteer led statewide effort to raise money to

improve children's health through treatment, research, and education. One hundred percent of the money raised by Log a Load goes to the Kentucky Children's Hospital in Lexington. Since 1997 Kentucky's forest industry has raised over \$875,000. This money has supported the "Child Life" area in the hospital, two "trees" in the Treehouse Playroom, two research endowments and goggles that are worn during MRI's to help children remain calm. The mural was placed in the Kentucky Children's Hospital near the elevators by funds



donated to the Log a Load for Kids program along with other murals in the pediatric outpatient clinics.

SHOW THE WOOD INDUSTRY DOES HAVE A HEART! Get involved with Log a Load for Kids. A silent auction is being conducted during the Kentucky Wood Expo. Stop by the silent auction located in indoor Exhibit Building #2 and bid on the many nice items. Simply write down your name, phone number, and bid for the items you would like to purchase. Be sure to stop before you leave to make sure no one has outbid you. The silent auction will close at 2:30 p.m. on Saturday, Sept. 16. Also, be sure to bid on the chainsaw carving competition auction, Saturday at 12:30 in the arena.

Student Programs

On Friday the Expo hosts a number of elementary, middle and high school students from local and surrounding counties. Students are able to attend the show free of charge thanks to the generosity of members of KFIA.

While at the Wood Expo, students participate in activities designed to show the value of forest products, the many ways that wood is used in our everyday lives, and the forest management practices used by the forest industry. Michael Froelich, KY Division of Forestry organizes with local FFA teachers to put together a program for the students to compete on their knowledge and provides a lumberjack competition. Several exhibitors also participate in the event by providing industry-related items

and handouts for the students. Special thanks to Stacy White and Laurie Thomas with UK Extension Service for organizing the program.

In addition to the exhibits and activities, students on Friday also could guess the weight of a log supplied by GreenTree Forest Products located in Wallingford, KY in a FREE log guess for prizes. Located near Exhibit Building #1 GreenTree Forest Products has provided sponsorship for the prizes given away in the 12 and under division and 13 and over division.

In 2021, GreenTree Forest Products provided a log that weighed in at 3,570 pounds.



Prizes for the Student Competition were donated by GreenTree Forest Products.

Thank You

GreenTree Forest Products provided this years log for the the Log Guess!



Log Guess

Show participants will have a chance to take a guess at the weight of a monster log that is on display near the KFIA Information Tent. This year's log was supplied by GreenTree Forest Products located in Wallingford, KY. Stop by and see a few KFIA members to give them your guess on the big log. You may even get a tip or two on how to make a good guess.

Something for the entire family! A choice of guessing for a STIHL chain saw, a rocking chair and Bluetooth headphones for the kids. All prizes are sponsored by GreenTree Forest Products, Inc., Wallingford, KY

The log at the 2021 show was supplied by GreenTree Forest Products, Wallingford, KY and weighed in at 7,600 pounds. Good Luck!!



Horse Logging

John Hite, Berea College Forestry, will demonstrate horse logging on Friday at noon and Saturday from 11 a.m. - 1 p.m. near booth #65.

The Friday program will be held in conjunction with the school program.



"We specialize in quality used forestry equipment and pride ourselves on offering equipment that is "Work Ready" and can be put right out in the field."

B & H Equipment
108 Honeysuckle Lane
Glasgow KY 42141
T: 270/261-1591

Email: dbequipment@live.com

Contact: Hunter or Brandi Clark



Brandeis Proudly Supports the
Kentucky Forestry
Industries Association



- Log Loaders/Forestry Excavators • Tracked Feller Bunchers •
- Felling Heads • Harvesters • Harvesting Heads • Forwarders •
- And More •

KOMATSU | Forestry Quality™

Contact your Local Brandeis to Learn more about Komatsu Forestry Equipment.

Corbin, KY
(606) 528-3700

Lexington, KY
(859) 259-3456

Louisville, KY
(502) 491-4000

Paducah, KY
(270) 444-8390

Stanville
(606) 478-9201



BrandeisMachinery.com

1-800-362-9332



www.mcpackage.com



Henry says... Come see our
UNIVERSAL CART!
Works with
ANY strap, ANY size!



BOOTH #9

BOOTH #9

Register your business to win

AN AUTHENTIC
U.S. SILVER DOLLAR!

Multiple drawings each day!

Stretch Film



Strapping



Tools,
Carts,
Seals,
and
MORE!

BLACK EQUIPMENT

"We work to earn the trust of our customers by acting with integrity and honesty. Our success is measured by the success and satisfaction of our customers, employees and vendors whom we serve."

Black Equipment Company

4092 McCollum Ct

Louisville, KY 40218

T: 502/572-5781

Email: cwaddell@blackequipment.com

Cell: 859-512-8214

Monte Pope

District Sales Supervisor

Customer Service: 800-238-2523

popem@iskbiocides.com

ISK BIOCIDES, INC.

ANYWAY YOU CUT IT.....ISK PROTECTS IT!

WWW.ISKBIOCIDES.COM

Fax: 901-344-5388 | 416 East Brooks Road | Memphis, Tennessee 38109

Pantron infrared photoelectric sensors are used in the most extreme environments. Install Pantron photo eyes in your sawmill to overcome...

Available with
Quick-Disconnect
for Easy Replacement!

Sawmill Sensors

- Waterproof - IP67 rated
- Not affected by vibration
- 60k LUX immunity to sunlight
- Through beam range up to 230 ft

pantron
automation, inc.
www.pantron.com
1-800-211-9468

SAWDUST DIRT
SUNLIGHT VIBRATION
MIST ICE FOG
STEAM



Check out our Food Vendors!

The Kentucky Wood Expo is privileged to have excellent food vendors onsite providing a variety for the entire family.

Double R Smokehouse

Williamsburg, KY

T: 606.215.6394

beth.rowe@adventhealth.com

Menu: smoked pulled pork tenderloin, cheeseburgers, hot dogs, fries, chili cheese fries, Lemonade

Bluegrass Foods

Frankfort, KY

T: 502.682.3488

Richardchristy1962@ayhoo.com

Menu: Greek Gyros, Oriental foods, burgers, BBQ, Sno-cones

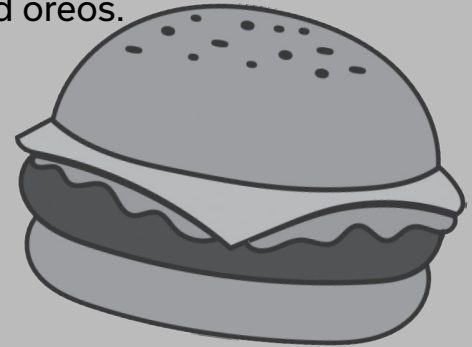
Hippe Tom's Concessions

Lexington, KY

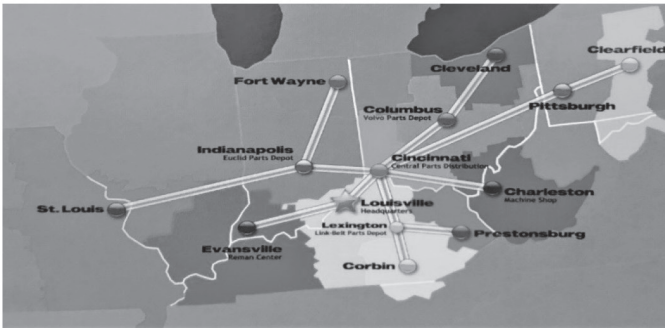
T: 502.603.9481

tdlester69@icloud.com

Menu: catfish sandwich, fries, blooming onions, tornado taters, corndogs, funnel cakes, deep fried oreos.



We go the distance.



Indianapolis, IN	317-247-9125	Pittsburgh, PA	412-741-1731
Ft. Wayne, IN	260-482-3681	Clearfield, PA	814-765-8500
Evansville, IN	812-867-6661	Charleston, WV	304-755-7788
Louisville, KY	502-456-4050	Cincinnati, OH	513-321-7833
Corbin, KY	606-528-9440	Cleveland, OH	614-438-4192
Prestonsburg, KY	606-874-2104	Columbus, OH	614-438-4192
St. Louis, MO	314-487-8925	Call: 1-877-DIG-RUDD (344-7833)	



Contests

Skidder Contest

Expo participants will have the opportunity to demonstrate their skill in the skidder driving contest. The contest will be held at 1:00 p.m. on Saturday, September 16. Those interested should register on Saturday at the contest site located in the back area of the grounds near the Meade Tractor booth. Friday competitors can register at the KFIA Tent located in between the two indoor exhibit areas. The registration fee is \$25. Any qualified person 18 years of age or older is invited to compete. The contest will be limited to the first 30 qualified competitors who register. Prizes will be as follows:

- 1st Place - \$300 & trophy
- 2nd Place - \$200 & trophy
- 3rd Place - \$100 & trophy



The contest will be conducted by: Coby Stephens, Kentucky Hardwood Lumber, Somerset, KY; Rob Cornett and Ray Madden, Kentucky Hardwood Lumber, and Dick Brantigan, D & M Forestry, Winchester, KY.



Skidder courtesy of Meade Tractor Inc.

Knuckleboom Contest

Patterson Chip Company is offering a Knuckleboom contest Friday and Saturday from 10 a.m. – 3 p.m. at their exhibit space. Visit the Patterson Chip Co. booth #9 & 10 to register for the Knuckleboom Contest. Contest prize money will be as follows:

- 1st Place - \$200 gift card & trophy
- 2nd Place - \$100 gift card & trophy
- 3rd Place - \$50 gift card & trophy





PRECISION

PRECISION HUSKY CORPORATION

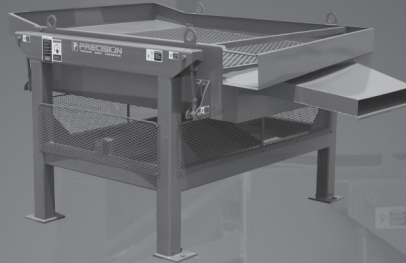


ENGINEERS AND MANUFACTURERS OF WORLD CLASS EQUIPMENT FOR
CHIP MILLS, SAWMILLS, WOOD YARDS, LOG LOADING, TIMBER
HARVESTING AND THE WOOD WASTE RECYCLING INDUSTRY.

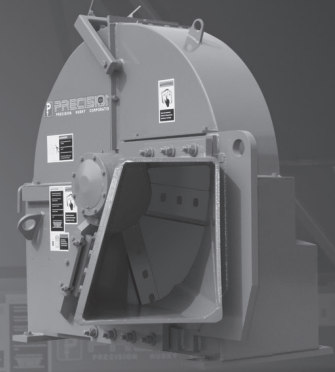
WWW.PRECISIONHUSKY.COM



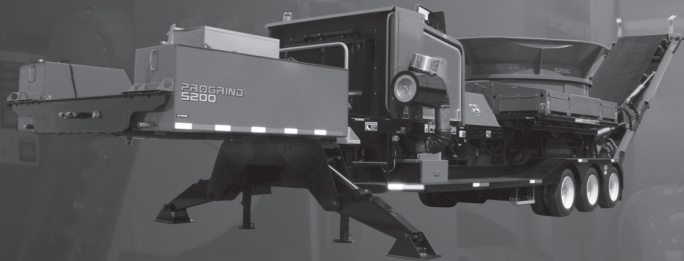
KNUCKLE-BOOM LOADERS



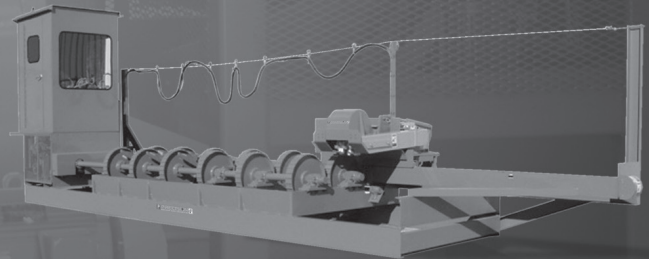
CHIP SCREENS



WASTE WOOD CHIPPERS



TUB AND HORIZONTAL GRINDERS



ROSSERHEAD DEBARKERS

Sold and Serviced By:



Patterson Chip Company Inc.

P.O. Box 657 - Barbourville, KY 40906

606-523-9480 www.pattersonchipco.com

HardwoodReview

HardwoodReview.com features the most accurate hardwood market intelligence available, in addition to powerful hardwood lumber sales and purchasing tools

For nearly 40 years, our team of veteran industry analysts has tracked, analyzed and reported on hardwood markets. We are the only provider of regular, in-depth analyses of North American and global market trends; the only source for instant graphical representations of market price histories and trade trends; and the only provider of hardwood lumber price forecasting.

Accurate Market Intelligence

Posted Weekly:

- Market price movements for 512 hardwood lumber, low-grade and flooring items
- Regionally based market analyses
- Feature articles covering specific hardwood markets and trends

Posted Monthly:

- Hardwood market forecasting
- Detailed export/import data for hardwood logs, lumber, moulding and flooring
- In-depth global market articles and commentary, by major region and species

Always Available:

- Graphical price histories
- Graphical trade data by species and market
- Analyses of 12 industry-impacting economic indicators
- Custom reports that allow one-click access to and/or email delivery of the information of highest importance to each user

Powerful Sales & Purchasing Tools

For Buyers:

- Search hardwood lumber inventories of leading suppliers
- Issue requests for quotes (RFQs)
- View suppliers' production capabilities, sales personnel & contact information

For Sellers*:

- Showcase real-time inventories and capabilities to thousands of qualified buyers
- Automated alerts when buyer searches match current inventory
- View and respond to all buyer RFQs
- Prospect for North American customers by postal code or specified radius
- Market your firm with targeted advertisements and website banners

*Fees for seller tools are in addition to the basic subscription

If the success of your business depends on trustworthy market intelligence, efficient sales, and/or smart procurement, you can depend on the Hardwood Review.

Contact us for a demonstration or scan the QR code to visit the website!



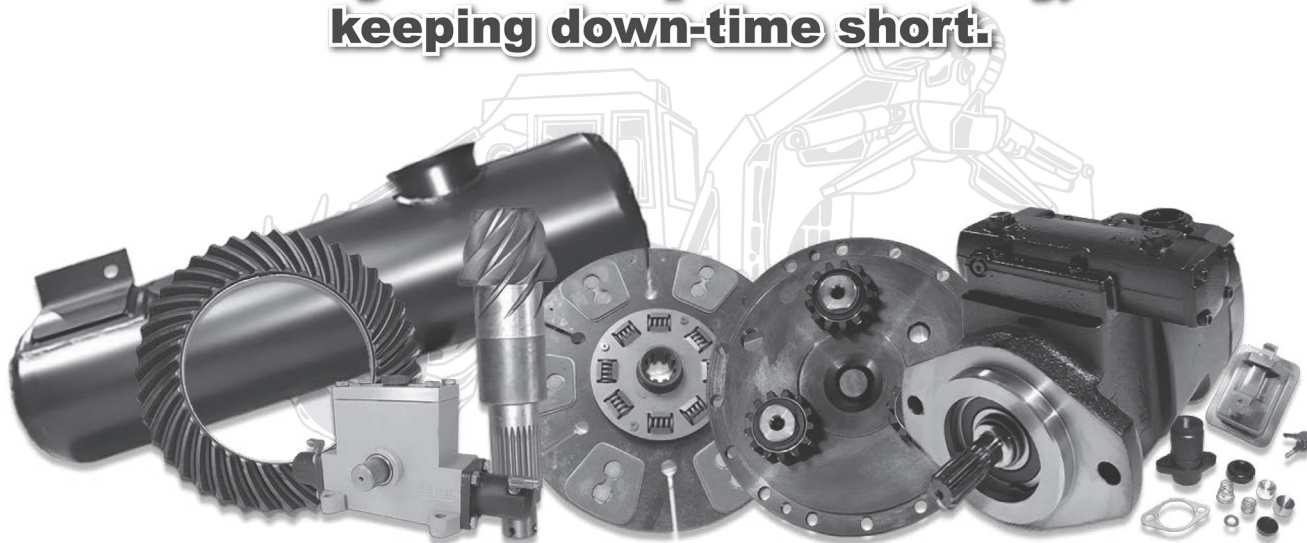
+1-704-543-4408 | www.hardwoodreview.com | info@hardwoodreview.com



REPLACEMENT PARTS FOR:
**John Deere, Timberjack, Tigercat,
Franklin, Tree Farmer, Ranger, Gearmatic, & more!**

**WE SUPPLY THE PARTS THAT
KEEP SKIDDERS RUNNING!**

**Many orders ship the same day,
keeping down-time short.**



**Contact us for your nearest distributor
or distributor inquiries are welcome
800-487-2335 sales@rightparts.com**

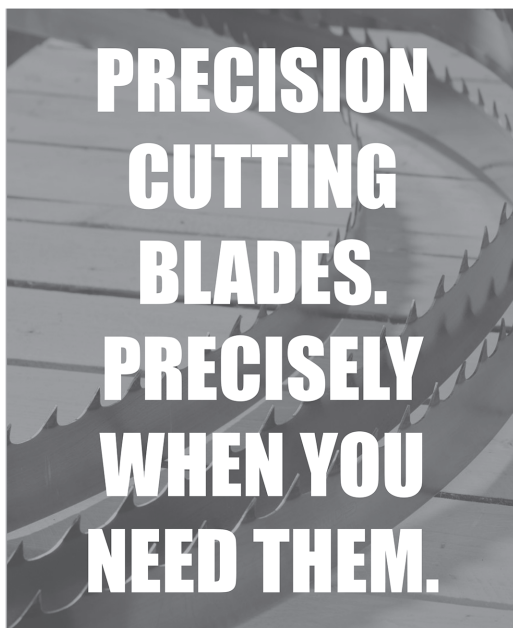
www.Rightparts.com

Manufacturers' names and part numbers are for reference purposes only. We do not suggest or imply that any item is that of or endorsed by the original manufacturer.

Outside Exhibit Area Exhibits

1-4 & 18 – Meade Equipment
 5 – Hud-Son Forest Equipment/Dave's Sawmill Sales
 6 – Brandeis Machinery & Supply
 7 – Piper's Saw Shop
 8-9 & 13 - Patterson Chip Co.
 10 – Knuckleboom Contest
 11 – Winston Machinery & Equipment
 12 - Precision Husky Co.
 13 – Patterson Chip Co.
 14 – 15 - SERRA Machine GmbH
 16 – 17 – Encon Equipment Co.
 18 – Meade Equipment
 19 – Haix North America Inc.
 20 – Wood-Mizer LLC
 21 – Hurdle Machine Works Inc.
 22 – Industrial Fasteners & Supply
 23 – Wood-Mizer LLC
 24 – Hurdle Machine Works Inc.
 25 – Black Equipment Co.
 26 & 38 - Rudd Equipment Co.
 27 – B & H Equipment
 28 – EZLOG Company Inc.
 29 – Ditch Witch Mid-States

38 – Rudd Equipment Co.
 39 – 42 - Carving Area
 • Carver - Sherri Corn
 • TB Wooden Creations - Troy Baker
 • Timbercrafts – Tim Bonney
 • White Hills Carving Co. – Travis Plucinski
 • Derek Richardson Chainsaw Art – Derek Richardson
 • Fundi Universe – Kiptoo Tarus
 43 – Ricer Equipment Co.
 65 – Horse Logging Demonstrations/Wagon Rides
 66 – Cutting Board Education
 67 – Cutting Board
 68 – Small Scale Logging
 70 – Wooden Tricks (Craft)
 71 – Educational Area – UK - Critter Tent
 72 – Educational Area - UK
 73 & 74 – KFIA Information/T-shirt Booth
 75 – Log Guess
 69 - USFS / Daniel Boone Nat. Forest
 70 - Onsite Technologies LLC



The new Simonds **PreSharp Super7** blades introduce the next level of performance in the evolution of narrow-kerf bandsaw blades.

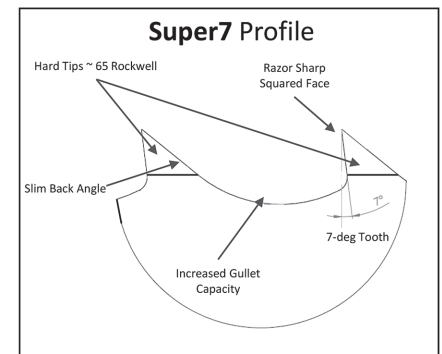
The **PreSharp Super7** blades feature a 7-deg tooth, increased gullet, slimmer back angle, and thicker blade (0.055") specifically designed to improve performance in extreme conditions, high production stave & hardwood mills, and hard, exotic, or frozen wood milling and resaw applications.

- 7-deg Tooth – Straighter, sharper tooth that cuts deep and smooth in exceptionally hard, exotic, or frozen wood, improving performance and providing higher production rates.
- Increased Gullet Capacity – Pulls more material and sawdust out of the cut, providing for smoother sawing and cleaner boards.
- Slim Back Angle – In addition to increasing the gullet capacity, the slimmer back angle introduces less blade material into the cut, decreasing friction and reducing heat.
- Thicker Blades (0.055") – Improve durability and blade life for mills with a high hp (25+) motor.

All **PreSharp Super7** blades are sharpened using our proprietary *PreSharp* Sharpening process, creating a unique square-face tooth to better control saw dust and deliver straight cuts. **PreSharp Super7** blades are razor sharp and ready to start improving your production right out of the box!

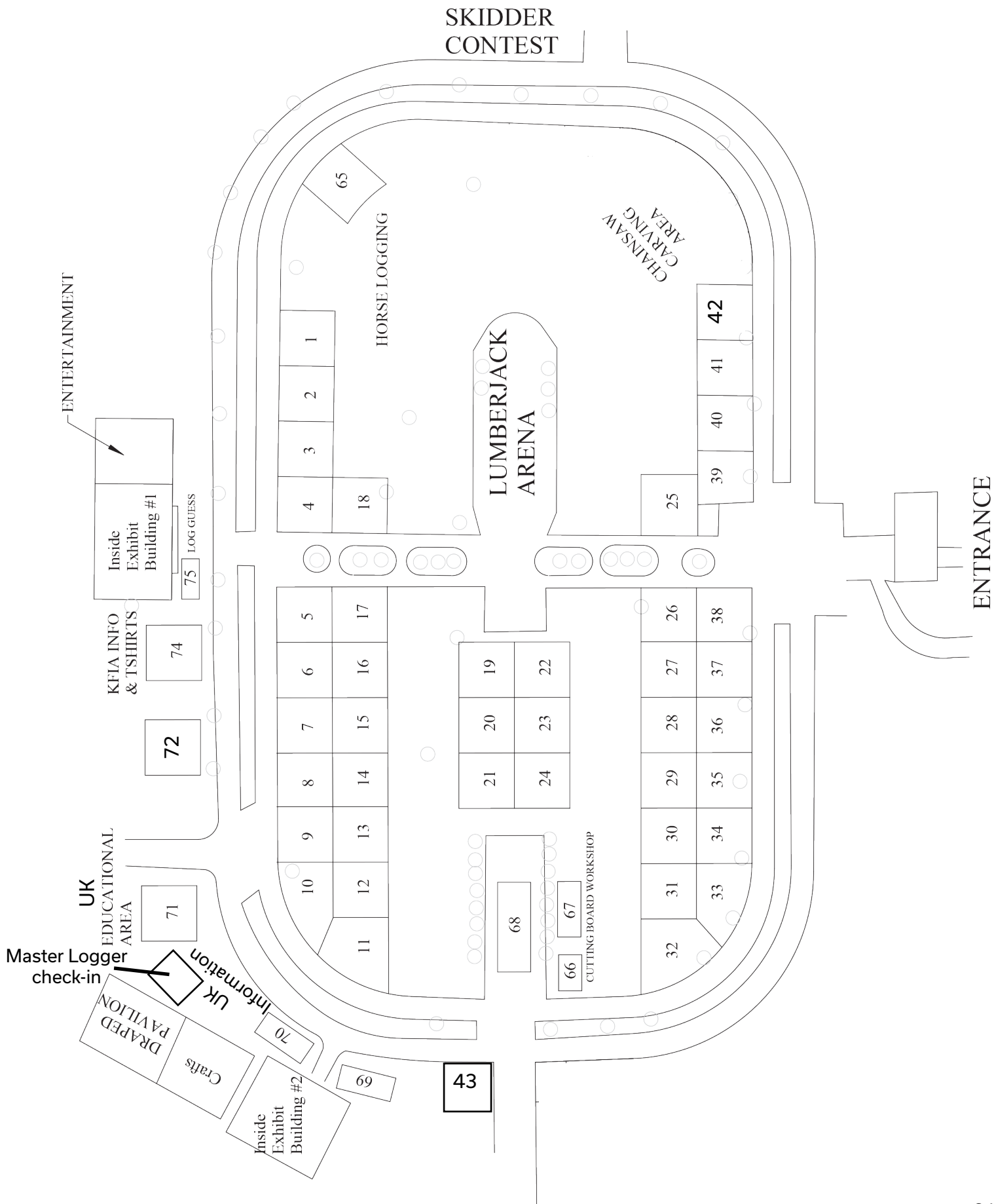
SPECIFICATIONS:

Item #	Size	Coil Length	Bulk Pallet
5315055875	1-1/2" x 0.055" x 7/8"	250'	2,250'
5320055875	2-1/8" x 0.055" x 7/8"	200'	1,200'

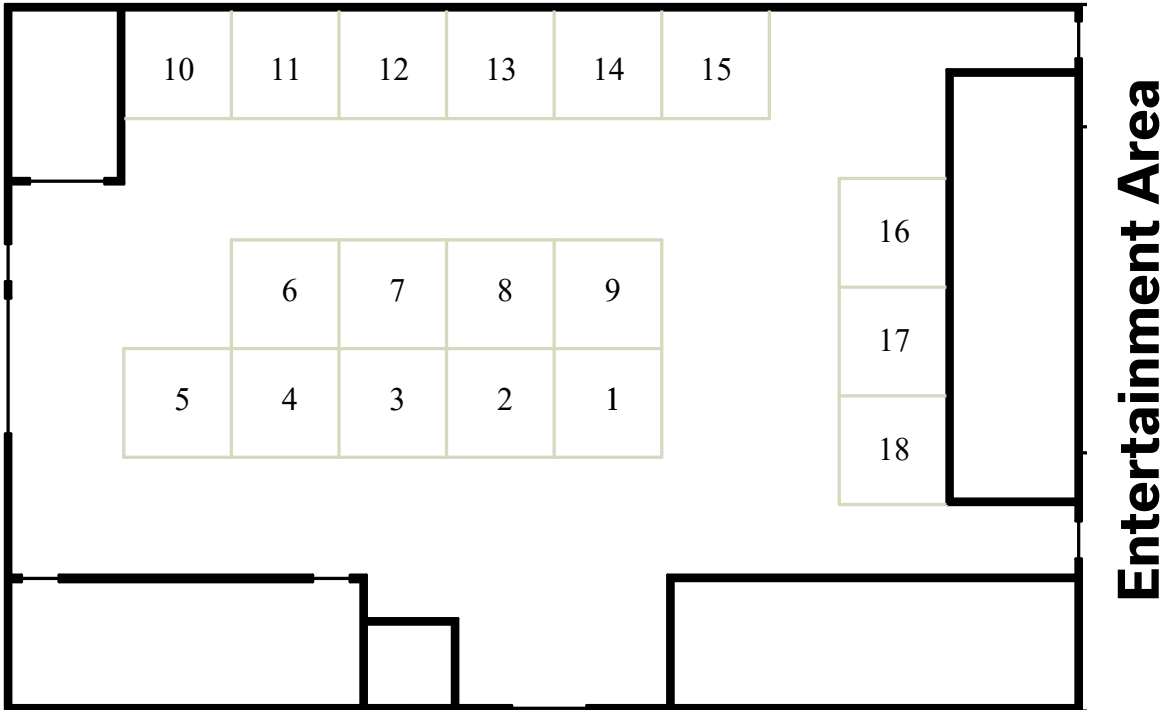


Visit our website: www.burtonmill.com
 Customer Service: 1-800-426-6226

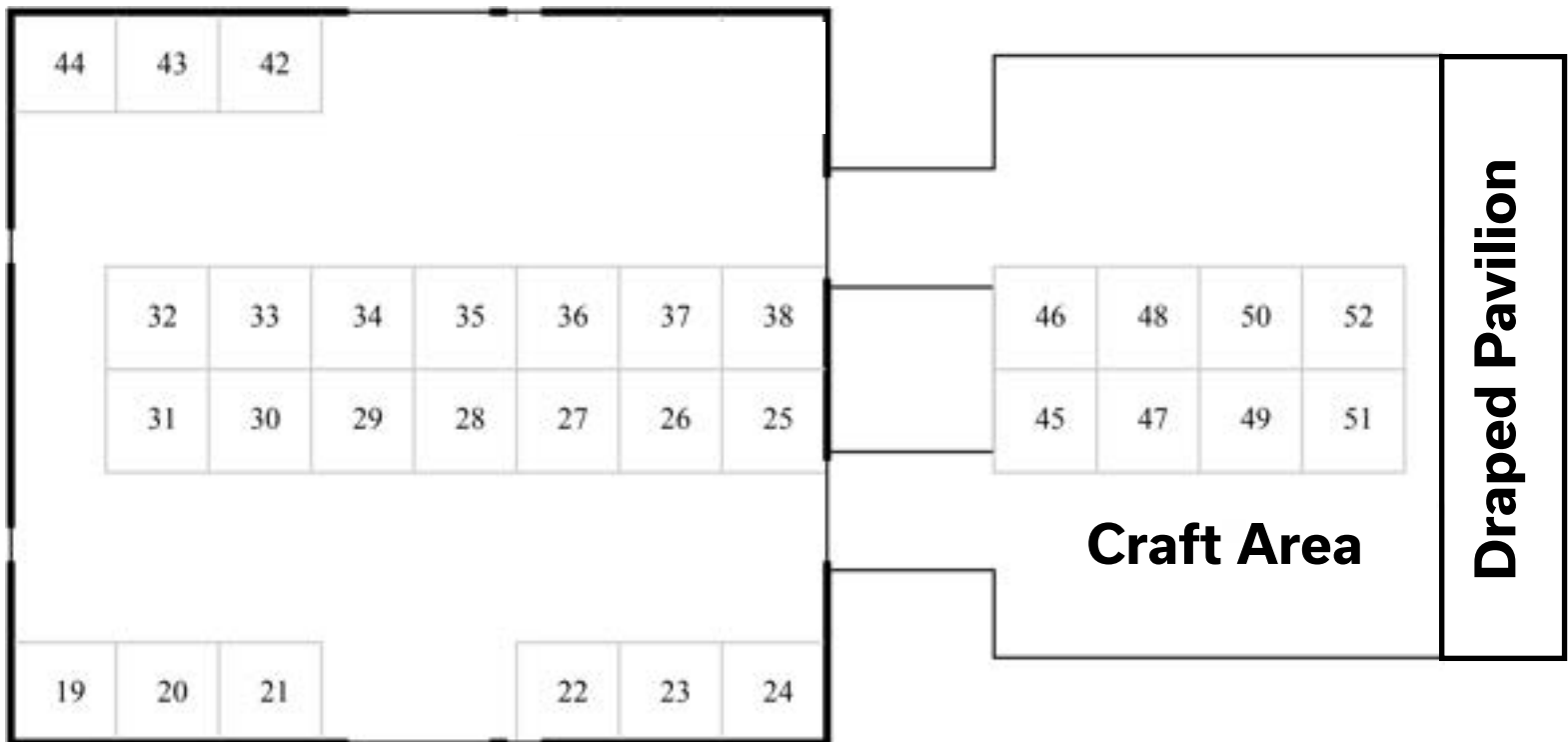
Outside Exhibit Area Map



Inside Exhibit Areas



Building #1



Building #2

Inside Exhibit Area Exhibits

Building #1

- 1 - Menominee Saw & Supply Co.
- 2 - Messersmith Manufacturing
- 3 - Sawmill MD
- 4 - Purple Wave Auction
- 5 - Nyle Dry Kilns
- 6 - Burton Mill Solutions
- 7 - Lumbermen Online
- 8 - Digital Wood Carver
- 9 - McGregor Packaging Corp.
- 10 - Kenne-Saw & Supply Co.
- 11 - Employer's Underwriters Logging Insurance
- 12 - ISK Biocides Inc
- 13 - Glasscock Log & Lumber Inc.
- 14 - Pantron Automation Inc.
- 15 - Conklin Products Distributor
- 16 - Forestry Systems
- 17 - 18 - Hurst Boiler

Building #2

- 19 - American Lumber & Pallet
- 20 -21 - American Chestnut Foundation
- 22 - 23 - Caswell Crafts
- 24 - Pennsylvania Lumbermens Mutual Insurance Company
- 25 - Marketplace Chaplains
- 26 - Kentucky Woodland Owners Assn.
- 27 - KY Tree Farm
- 28 - Kentucky Division of Forestry
- 29 - UK Forestry Extension Department
- 30 - 34 - Kentucky Log a Load for Kids Silent Auction
- 35 - Lumbermen's Magazine
- 36 - National Hardwood Magazine
- 37 - Hardwood Review
- 38 - Industrial Reporting

- 30 - Woodland Parts & Service



Live Music Kyle Tipton - Featured Artist

The music will be in the Entertainment area located next to the Indoor Exhibit Building #1.

Stop by and make a request!

Master Loggers Get CEU's at the Expo

The Kentucky Forest Industries Association invites loggers to attend a free continuing education short-course scheduled at the Kentucky Wood Expo. The classes will be worth 6 hours of continuing education credit. The Forest Conservation Act requires all Kentucky Master Loggers to have six hours of continuing education every three years to maintain Master Logger status.

For more information on how to attend these classes stop by the Master Logger Booth in the Pavilion. These classes are being offered by the association as a service to the logging community. Kfia is working to help our logging members stay current on issues in Kentucky.



Kentucky Master Loggers! Earn 6 CEU Credits

In order for Kentucky Master Loggers to earn 6 hours of Continuing Education they must complete a checklist of 12 activities:

Must attend 4 presentations:

Friday, Sept. 15

- Forest Health Program - 1-4 p.m. (counts as 4 presentations - you can also earn KY Pesticide Applicator CEU's)
- White Oak Timber Production - 10 a.m. (counts as 1)
- Felled Tree Surveys for CE hours - 10:30 a.m. (counts as 1)
- Timber Product Output Surveys Importance - 11:30 a.m. (counts as 1)
- Make a cutting board - 1:30 - 5 p.m. (view 1 session; counts as 1)
- Hot Saw Demo - times vary - Haix North America (booth 19; counts as 1)

Saturday, Sept. 16

- Small Scale Logging Demo (counts as 2)
- Make a cutting board - 8:30 a.m. - 4:30 p.m. (counts as 1)
- White Oak Timber Production - 10 a.m. (counts as 1)
- Felled Tree Surveys for CE hours - 10:30 a.m. (counts as 1)
- Timber Product Output Surveys Importance - 11:30 a.m. (counts as 1)
- Hot Saw Demo - times vary - Haix North America (booth 19; counts as 1)

Both Days: Must visit 6 vendors:

- Vendor visits must be logging related.

Both Days: Must participate in 2 Miscellaneous tasks:

- Skidder contest
- Knuckleboom contest
- Guess the Weight of the log
- Log-A-Load silent auction
- Other approved booth visits

**Pick up a form for
signatures at the
Kentucky Master
Logger Booth
(UK information area).**

**Complete 12
activities.**

**Bring your
completed checklist
to the Master Logger
Booth to obtain your
CEU credit.**



Kentucky Division of Forestry

Sustainable Forests = Sustainable Industry

Timber Harvest Compliance and Kentucky Master Logger Program

- Working with Loggers to Ensure Water Quality
- Partner with University of Kentucky and KFIA to Develop and Conduct Kentucky Master Logger Training
- 3-Day Kentucky Master Logger Training
- Continuing Education Courses



Resource Utilization and Marketing

- Compiling the Primary and Secondary Wood Industries of Kentucky Directory
- Conducting Industry Surveys
- Forest Inventory and Analysis
- Compiling and Reporting Data on Quantities and Species of Wood
- Reporting Timber Products Output



Forest Stewardship

- Forest Stewardship Planning
- Technical Assistance to Forest Landowners
- American Tree Farm System Certification
- Woodland Owner Short Courses
- Tree Farmer of the Year



Forest Health

- Monitor Threats to our Forests are Insects, Diseases, Invasive Plants, and Bouts of Extreme Weather.
- Provide Technical Assistance to Landowners
- Publishes the Forest Health Highlights Bulletin annually



Wildland Fire Management

- Protection of Privately Owned Forests from Wildfire
- Prescribed Fire Use for Fuels and Resource Management
- KFIA Arson Reward Program



Nurseries

- Seedlings for Reforestation
- White Oak Genetics Study
- American Chestnut Study



Kentucky's State Forests

- Working Forests Demonstrating Management to Ensure Biological Diversity and Sustainable Use.
- Harvests Provide Resource for Forest Product Industries



TEAM KENTUCKY.
ENERGY AND
ENVIRONMENT CABINET
DIVISION OF FORESTRY

Got Questions? KFIA Has Answers

KFIA President George Crawford, Merrick Hardwoods Lumber along with KFIA Board of Directors are on hand to answer questions at the KFIA Information Tent. These volunteers will be more than happy to help you locate an exhibitor, find your way around the grounds, tell you the benefits of being a KFIA member, register for contests, or sell you a t-shirt or cap.

Stop by the KFIA Tent located in the center of the grounds. Let us tell you how you can become a member of the Kentucky Forest Industries Association and learn about the issues and concerns of the forest products industry.

PRESIDENT - George Crawford, Merrick Hardwoods Lumber

VICE PRESIDENT - Tom DeFilippo, H & S Lumber

SECRETARY/TREASURER - Erika York, A & Y Enterprises

BOARD OF DIRECTORS

Scott Anderson, Tarter Gate Wood Products Inc.

Paul Byler, Hart County Hardwoods

Ryan Drake, Drake Logging

Deron Harris, Premium Hardwoods, Inc.

Brian Johnson, Middle Tennessee Lumber

Paul Maxwell, Maxwell Brothers Lumber

Justin Nichols, Benton Wood Products

William (Bill) Perry, Powell Valley Millwork

John Reinstette, UK Robinson Forest

Kenny Smith, Collett & Smith Logging, Inc.

Kevin Tudor, Domtar Paper Co. LLC

Canon Vice, GreenTree Forest Products, Inc.



Become a Member

Kentucky Forest Industries Association (KFIA) is a trade association dedicated to serving and promoting the forest products industry of Kentucky. Founded in 1965, it has nearly 850 active members across various sectors of the forest industries including logging, primary, secondary, supplier, service, and professional categories, we are committed to Growing Kentucky's Forests and Supplying the World.

The advantages to membership are abundant with a network of businesses across the Commonwealth and surrounding states. Member engagement is one of the most valuable components we have within our organization – friendship, exchange of ideas, and business partnerships offer all participants the opportunity to share their collective experiences and learn from industry contacts. One new idea or connection between producer and customer can easily offset the limited cost of dues.

KFIA works tirelessly in Frankfort and Washington, D.C. to promote and protect the forest industries. Representation is critical for decision-makers in government to understand our products, our companies, and our culture. Coordinating with the University of Kentucky, we showcase the forest industry's economic impact on the state to ensure we continue building on the success of previous generations.

Should you have any questions about membership, stop by the KFIA Information Tent or contact the KFIA office at (502) 695-3979 or request membership information at michele@kfia.org.

From The Woods Today

Wednesdays @ 11am EDT

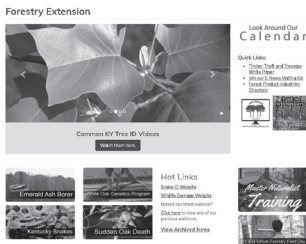
A weekly show focusing on Kentucky woodlands and wildlife



FromTheWoodsToday.com

Want to learn more about Kentucky's forests and wildlife?

Check out these UK Forestry Resources:



For Kentucky forestry and wildlife publications and resources visit our website.

www.UKForestry.org



Watch nearly 300 Kentucky videos on forestry and wildlife by visiting our YouTube channel.

<https://www.youtube.com/c/UKForestryandNaturalResourcesExtension>



To stay up-to-date on the latest Kentucky forestry and wildlife news and updates by liking us!

<https://www.facebook.com/ForestryExtension>

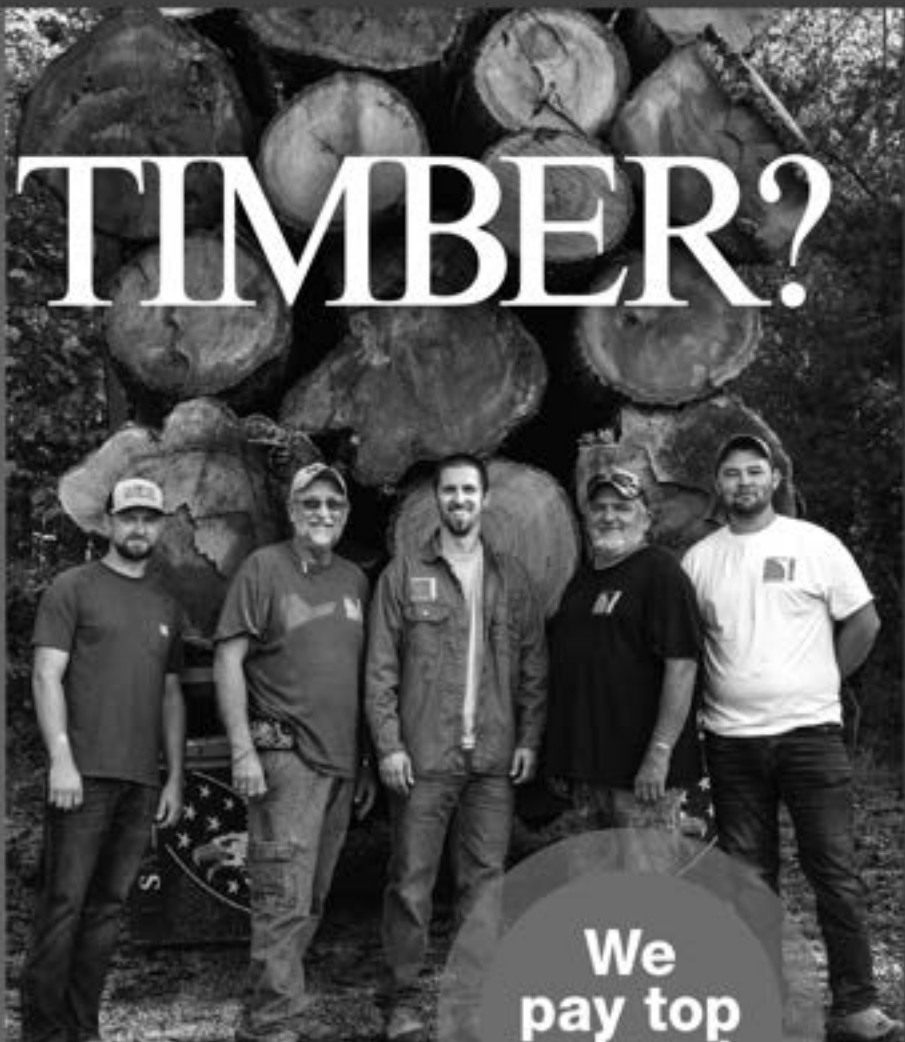


GOT TIMBER?

Greentree Forest Products is a locally owned family business producing approximately 22 million board feet of quality Appalachian hardwood lumber per year.

With over 100 years of combined experience,

our Log and Timber Procurement Team is able to provide you with the best prices in a personalized and timely manner. Learn more at greentreeforest.com.



**We
pay top
prices!**

We buy:

- White Oak & Walnut Veneer
- White Oak Stave Logs
- Standing Timber
- Timber Land

Saw logs in:

- | | |
|-------------|---------------------|
| ■ Red Oak | ■ Ash |
| ■ White Oak | ■ Hickory |
| ■ Walnut | ■ Poplar |
| ■ Cherry | ■ Hard & Soft Maple |

For Logs, contact:

■ **Greentree Forest Products, Inc.**

Canon Vice | 606-462-1489 | 764 Muses Mill Rd, Wallingford, KY 41093

■ **Morehead, KY Yard**

Tyler Kidd | 606-356-9315 | 2751 KY-519, Morehead, KY 40351

■ **Salysersville, KY Yard**

Charley Purcell | 606-462-1291 | 3855 E Mountain Pkwy, Salysersville, KY 41465

For Timber or Timberland, contact:

- Canon Vice | 606-462-1489 or Barry Hamm | 606-356-2054



greentreeforest.com



LET'S GET TO **WORK.**

McCoy Construction & Forestry is proud to be your John Deere construction and forestry equipment partner in the field. From skid loaders and backhoes to production-class excavators, dozers, harvesters, forwarders and feller bunchers, we have what you need to get the job done.



STOP BY OUR KENTUCKY LOCATIONS TODAY!

OWENSBORO, KY

315 Worthington Rd
Owensboro, KY 42301

270-684-2339

PADUCAH, KY

6115 US Highway 45 S
Paducah, KY 42002

270-554-1131



JOHN DEERE



mccoycf.com

Experience All Things Wood

For forty years, the Kentucky Wood Expo has proudly hosted a variety of exhibits supporting wood industry products & services. If it is used in the sawmill, logging or wood industry, you're likely to find it at the 2023 Kentucky Wood Expo. There are over 75 inside and outside exhibits present in Lexington for the two day show representing over 10 states.

Exhibits are located in the indoor buildings, pavilion and throughout the grounds. A list of exhibitors and their location is available on pages 34 - 36.

The show is also designed with enough industry related activities and entertainment so that the general public can view our industry in a setting that is relaxing and entertaining. The show has been very successful in Lexington and we continue to work hard to grow the Wood Expo and attract attendees.

The latest in sawmill and pallet equipment, roll-

ing stock, mill supplies and many other forest related products will be displayed, demonstrated and sold. In addition to over 75 inside and outside exhibits, the young and old alike will enjoy the University of Kentucky's Critter Tent. On both days, this hands-on tent allows visitors to handle and gaze upon several nonvenomous, live amphibians and reptiles. This tent will also house UK Entomology's insect and spider "petting zoo", featuring live tarantulas, scorpions, giant roaches, and other creatures. This will be an opportunity for people to get a close look at some very unusual creatures in a safe, educational environment.

Educational exhibits are also set up by those institutions and agencies that serve Kentucky's Wood Industry.

KFIA appreciates the response from our Exhibitors and are proud to be a part of a highly successful regional equipment show. We encourage everyone to support those companies who exhibit at the show each year.



Messersmith

Industrial Biomass Boiler Systems
Material Handling Equipment

Craig Albright - Sales

2612 E. Road
Bark River, MI 49807

T: (740)466.5430
calbright14@gmail.com

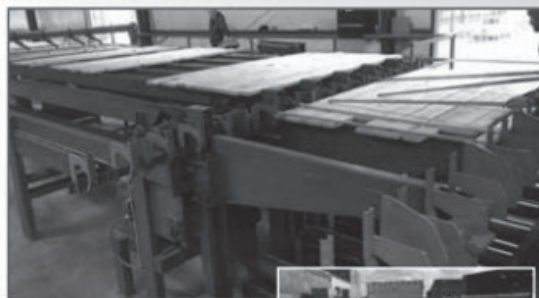
www.burnchips.com

Kentucky Wood Expo Sponsors...Thank You!

American Wood Fibers – General Show Sponsor
Baillie Lumber Co. – General Show Sponsor
Brewco Inc. – General Show Sponsor
Bryan Equipment Sales, Inc – Student Program & Competition
Encon Equipment – General Show Sponsor, golf carts
Farrow Lumber Co. – General Show Sponsor
GreenTree Forest Products – Log Guess
Kentucky Hardwood Lumber – Skidder Contest
McCreary County Hardwoods, Inc. – General Show Sponsor
Mullican Flooring – General Show Sponsor
Powell Valley Millwork – General Show Sponsor
Precision Husky Corp. – General Show Sponsor
Speyside Bourbon Cooperage, Inc – General Show Sponsor

OVERBUILT TO OUTLAST & OUTPERFORM

*Heavy-Duty Lumber Stackers, Tilt Hoists &
ALL Material Handling Solutions!*



From Design to Installation -
Winston Stackers are Custom Built
to fit Your Needs!



4', 6', and 8' Models Available

Tilt Hoists • Log Decks • Log Troughs • Conveyors • Jump
Transfers • Roll Cases • Green Chains • Parts/Service

800-844-7680

winstonmachineryandequipment.com
winstonmachinery@yahoo.com

**WINSTON MACHINERY
& EQUIPMENT CO., INC.**

351 County Road 356, Lynn, AL 35575
Fax: 205-893-2401

Kentucky Wood Expo Committee

The show committee would like to thank the fellow KFIA members for their donation of prize money, logs, cants, personnel, equipment, and most valuable, time --- just to name a few of the requests provided by the forest industry for use by the Kentucky Wood Expo. As you can see from the list of people involved with the show, without the support of KFIA members this event would not be the success it is. Your cooperation and dedication to our industry is very much appreciated. THANK YOU!!

Rex Patterson, Patterson Chip Co. - Chairman & Knuckleboom Contest

George Crawford, Merrick Hardwoods Lumber - KFIA President, KFIA Information Tent, Student log guess

Dan Allard, Domtar Paper Co. LLC. - KFIA Information tent

Mervin Strader, Strader Bros. LLC - Past KFIA President, KFIA Information Tent

Darrin Gay, Gay Brothers Lumber - Front Gate

Deron Harris, Premium Hardwoods - Onsite Assistance

Canon Vice, GreenTree Forest Products - Log Guess

Chad Niman, UK Dept. of Forestry and Natural Resources - Inside exhibits, Cutting Board Program, Small Scale Logging

Stacy White, UK Extension - Student Activities

Michael Froelich, KY Division of Forestry - FFA Competition

Chuck Courtney, Courtney Timber Harvesting - KFIA Information tent

Coby Stephens, Kentucky Hardwood Lumber- Material Requests & Skidder Contest

Jeff Stringer, UK Dept. of Forestry and Natural Resources - Local Contact, Education programs

John Reinstetle, UK Dept. of Forestry and Natural Resources - onsite assistance

Renee' Williams, UK Dept. of Forestry and Natural Resources - First Responders Conclave, Local Contact, publicity

Laurie Thomas, UK Dept. of Forestry and Natural Resources - Student Conclave

Micheal Ammerman, UK Dept. of Forestry and Natural Resources - Small scale logging and on-site assistance

Stewart West, onsite assistance

Troy Lovegrove, Robinson Stave Inc. - Exhibitor Dinner

SIMONDS
INTERNATIONAL

silvertip
Wood-Mizer Blades

LENOX

Best Blades, Best Deals all at One Place

**PIPER'S
SAW SHOP**

1-800-845-6075

GET THE MOST OUT OF YOUR BLADES BY
LETTING US DO YOUR RESHARPENING!

ASK ABOUT THE PIPER CHOPPER
TO TAKE CARE OF YOUR SCRAP
BLADES!

Thank You KFIA Sponsoring Members

PLATINUM LEAF \$2,000

Roy Anderson Lumber Co.
Inc. Tompkinsville, KY

Domtar Paper Co.,
LLC Hawesville, KY

GreenTree Forest
Products Inc.
Wallingford, KY

Houchens Insurance Group
Lexington, KY

Independent Stave
Company
Columbia, MO

Stella Jones Corp.
Fulton, KY

Kentucky Department of
Agriculture
Frankfort, KY

Merrick Hardwoods
Lumber
Burnside, KY

McCoy Construction &
Forestry
Owensboro, KY

Pennsylvania Lumbermens
Mutual Insurance
Philadelphia, PA

Somerset
Hardwood Flooring
Somerset, KY

Speyside Bourbon
Cooperage, Inc.
Jackson, OH

York Legacy Mill
Burkesville, KY

GOLD LEAF \$1,000

- A & Y Enterprises
- American Woodmark
- Assured Partners NL
- Boyd CAT
- BPM Lumber LLC.
- Brandeis Machinery & Supply
- DMSI Software
- Dunaway Timber Co.
- Eagle Lumber Co. LLC
- Estill Wood Products, Inc.
- Forest Products, Inc.
- Gay Brothers Lumber
- Hart County Hardwoods, LLC
- Jarvis Insurance Agency, Inc.
- Koppers Inc.
- La-Z-Boy Corporation
- Maxwell Brothers Lumber
- McCreary County Hardwoods
- Meade Tractor
- Patterson Chip Co.
- Pierce Construction & Maintenance Co. Inc.
- Powell Valley Millwork
- Quality Pallet Co. LLC

- Rudd Equipment Co.
- Stephens Hardwood LLC
- Taylor Machine Works
- U-C Coatings Corp.

SILVER LEAF \$800

- Beshear Sawmill, Inc.
- Caneyville Hardwoods
- Crawford Tie & Lumber, LLC
- Cumberland Cooperage LLC
- Duraflame East, LLC
- Laurel County Wood Products, LLC.
- Lewis Lumber & Milling Inc.
- Pactiv Evergreen Inc.
- Phoenix Paper Wickliffe, LLC.
- Harold White Lumber, Inc.
- Richard White Wood Products

BRONZE LEAF \$600

- Allen's Logging & Sawmill LLC
- American Wood Fibers

- BG Timber LLC
- Corley Manufacturing Co.
- Diamond Forest Resources Inc.
- Forest Industries Workers' Compensation Fund
- Kingsford Manufacturing
- Lebanon Oak Flooring
- May Brothers Lumber Co.
- Parkland Lumber
- Pixelle Specialty Solutions
- Promark Percussion
- Scott Davis Chip Inc.
- Smith Creek, Inc.
- Southern Forestry Consultants
- Superior Hardwoods of Ohio, Inc.
- Upper Cumberland Hardwoods, Inc.
- WR Hardwoods
- Wayne Lumber Co. Inc.
- Young Manufacturing Co. Inc.
- Zak Cooperage

Many thanks to our Advertisers...

- Aftermarket Parts Inc.
- B & H Equipment
- Black Equipment Co.
- Brandeis Machinery
- Burton Mill Solutions
- Encon Equipment
- GreenTree Forest Products, Inc.
- Hardwood Review
- Houchens Insurance Group
- Hurdle Machine Works
- Hurst Boiler
- ISK Biocides Inc.
- KY Division of Forestry
- McCoy Construction & Forestry
- McGregor Packaging Corp.
- Meade Tractor
- Messersmith Manufacturing, Inc.
- Pantron Automation, Inc.
- Patterson Chip Co./ Precision Husky Corp.
- Piper's Saw Shop Inc.
- Rudd Equipment Co.
- SERRA Sawmills
- Winston Machinery & Equipment Co.

Thank YOU 2023 Kentucky Wood Expo Exhibitors

OUTSIDE KWE EXHIBITORS

B & H EQUIPMENT - 27

108 S. Honeysuckle Ln.
Glasgow, KY
dbequipment@live.com
T: 270.261-1591
Products: log skidder, used equipment

BLACK EQUIPMENT COMPANY - 25

4092 McCollum Ct.
Louisville, KY
cwaddell@blackequipment.com
T: 502.572.5781
Products: JCB forklift, side loader

BRANDEIS MACHINERY & SUPPLY CO. - 6

1801 Watterson Trail
Louisville, KY
jami_frank@bramco.com
T: 502.493.4235
Products: Brandeis Forestry Machinery

DITCH WITCH MID-STATES - 29

400 Sparrow Dr.
Shepherdsville, KY
info@ditchwitchmidstates.com
T: 502.543.3309
Products: Bandit wood chippers, stump grinders, attachments, Ditch Witch skid steers, giant compact wheel loaders

ENCON EQUIPMENT - 16 & 17

140 Hendren Way
Nicholasville, KY
emily@axrents.com
T: 859.885.0708
Products: wood processing equipment

EZLOG COMPANY - 28

4509 Illinois Ave.
Louisville, KY
info@ezlogstaple.com
T: 270.963.0844
Products: veneer log staples

HAIX NORTH AMERICA - 19

2320 Fortune Drive, Ste 120
Lexington, KY
t.cline@haix.com
T: 866.344.4249
Products: work books and clothing

HUD-SON FOREST EQUIPMENT /DAVE'S SAWMILL SALES - 5

PO Box 345
Barneveld, NY
mike@hud-son.com
T: 315.896-4316
Products: Hud-Son portable sawmill

HURDLE MACHINE WORKS INC. - 21

16195 Hwy 57
Moscow, TN
nicole@hurdlemachineworks.com
T: 901.877.6251
Products: sawmill and equipment

INDUSTRIAL FASTENER & SUPPLY - 22

210 Browning Road
Somerset, KY
justin@indfassupply.com
T: 606.677.9229
Products: air tools, bandsaw blades, nails

MEADE TRACTOR -

1, 2, 3, 4 & 18
1797 Lexington Road
Georgetown, KY
leonard.new@meadetractor.com
T: 859.623.2030
Products: John Deere Equipment

PATTERSON CHIP CO. - 9 & 10 & 13

PO Box 657
Barbourville, KY
pattersonchipco@earthlink.net
T: 606.523.9480
Products: Barko equipment, Pitts trailers, logging supplies

PENNSYLVANIA LUMBER-MENS MUTUAL INSURANCE COMPANY - 24

2005 Market Street, Ste. 1200
Philadelphia, PA
arobinson@plmins.com
T: 267.800.3955
Products: Insurance for wood products & building industry

PIPER'S SAW SHOP - 7

PO Box 30
Central City, KY
Andrew.fauver@piperssaw.com
Products: saw blades, teeth shanks, equipment.

PRECISION HUSKY - 12

PO Drawer 57
Leeds, AL
mikew@precisionhusky.com
T: 205.640.5181
Products: chippers, grinders, loaders, sawmill equipment, chip mill

RICER EQUIPMENT, INC. - 43

49 Good Manor Road
Lucasville, OH
danny.gatrell@ricerequipment.com
T: 740.289.4318
Products: Tigercat & Prentice Forestry equipment

RUDD EQUIPMENT CO.
- 26 & 38

728 W. Cumberland Gap
Pkwy, Corbin, KY
dballou@ruddequipment.com
T: 606.528.9440
Products: Rudd equipment

SERRA MACHINE GmbH
- 14 & 15

1035 Parkway Drive, Bldg. 10,
Springhill, TN
jason@wintersteiger.com
T: 801.550.4878
Products: portable sawmill

**WINSTON MACHINERY &
EQUIPMENT CO. - 11**

PO Box 159
Lynn AL
winstonmachinery@yahoo.
com
T: 205.893.5487
Products: Log deck

WOOD-MIZER LLC. - 20 & 23

8180 W. 10th Street
Indianapolis, IN
mmoore@woodmizer.com
T: 317.271.1542
Products: portable band saw-
mill & accessories

INSIDE EXHIBITORS

**AMERICAN LUMBER &
PALLET - 19**

PO Box 1136
Fayetteville, TN
shawn@amlumber.com
T: 800.992-3432
Products: trade magazine

**CONKLIN PRODUCTS
DISTRIBUTOR - 15**

10430 Carter Rt. B
Gramdin, MO
davenbonita@emypeople.net
Products: oil grease & lubri-
cant products

DIGITAL WOOD CARVER - 8

189 W. Walnut St.
Martinsville, IN
beth@digitalwoodcarver.com
T: 317.409.1450
Products: CNC wood carving
Equipment
**EMPLOYER'S UNDERWRITERS,
LLC - 11**

PO Box 290423
Nashville, TN
jnabors@euinsurance.net
T: 615.553.4928
Products: Insurance

FORESTRY SYSTEMS INC. - 16

4105 Oak Ridge Rd.
Summerfield, NC
debo@forestrysystems.com
T: 336.643.9663
Products: Hardwood Inventory
Management Software Systems

**GLASSCOCK LOG & LUMBER
INC. - 10**

2870 Springfield Road
Bloomfield, KY
lumber@glasscocklumber.com
T: 502.252.9408
Products: lumber sales

HARDWOOD REVIEW - 25

kim@hardwoodreview.com
T: 901/767-9126
Products: trade magazine

HURST BOILER - 17 & 18

100 Boilermaker Lane
Coolidge, GA
jhurst@hurstboiler.com
T: 229.346.3545
Products: boilers

ISK BIOCIDES, INC. - 12

416 East Brooks Road
Memphis, TN
popem@iskbiocides.com
T: 859.512.8214
Products: end wax and Sapstain
control

KENNE-SAW & SUPPLY CO.
- 10

PO Box 265, White GA
info@kenne-saw.com
T: 770.420.9235
Products: bandsaw blades
**KENTUCKY CHAPTER AMERI-
CAN CHESTNUT FOUNDATION**
- 20 & 21
Mt. Sterling, KY
dkdarnell@roadrunner.com
T: 859.585.9520
Products: Education

KY DIV. OF FORESTRY - 28

300 Sower Blvd, Frankfort, KY
steve.kull@ky.gov
T: 502.782.7167
Products: Education

KY TREE FARM - 27

106 Progress Drive
Frankfort, KY
info@kytreefarm.com
T: 502.695.3979
Products: Education

**KY WOODLAND OWNERS
ASSN. - 26**

www.kwoa.net
Products: Association

LUMBERMENONLINE - 7

2508 Pillow Drive
Columbia, TN
triciah@lumbermenonline.com
T: 931.381.1638
Products: trade magazine

LUMBERMENS MAGAZINE - 35

PO Box 1916
Columbia, TN
morris@lumbermensco.com
T: 888.401.6367
Products: trade magazine

**MARKETPLACE CHAPLAINS
- 25**

430 Courfield Dr.
Franklin, TN
kevincummins@mchapusa.com
T: 423.920.9174

Products: Chaplain Services

**MCGREGOR PACKAGING
CORPORATION - 9**

PO Box 602
Sylvania, GA
Jenniferk@mcpackage.com
T: 800.362.9332
Products: packaging supplies

**MENOMINEE SAW &
SUPPLY - 1**

PO Box 515
Menominee, MI
john@menomineesaw.com
T: 906.863.2609
Products: sawmill equipment,
logging, pallet supplies

**MESSERSMITH
MANUFACTURING INC. - 2**

2612 F Road
Bark River, MI
lnewton@burnchips.com
T: 906.466.9010
Products: Biomass boiler system

NYLE DRY KILNS - 5

12 Stevens Road, Brewer ME
jpitts@nyle.com
T: 800.777.6953
Products: Dry Kilns

**NATIONAL HARDWOOD
MAGAZINE - 36**

PO Box 34908
Memphis, TN
tammy@millerwoodtradepub.
com
T: 901.372.8280
Products: trade magazine

**PANTRON AUTOMATION,
INC. - 14**

109 Hubbard Street
Belmont, NC
wayne@pantron.com
T: 704.825.4965
Products: Electronic sensors,
light curtains

PURPLE WAVE AUCTION - 4

825 Levee Dr.
Manhattan, KS
association@purplewave.com
T: 866.608.9283
Products: Online auctions of
used equipment

SAWMILL MD - 3

5672 Cherokee Nene Lane
Crestview, FL
Duncan.ferguson@mindspring.
com
T: 850.902.2886
Products: fiber saving Debarker
heads

**UNIVERSITY OF KENTUCKY
FORESTRY EXTENSION - 29**

216 T. P. Cooper Building
Lexington, KY
forestry.extension@uky.edu
T: 859.257.7597
Products: education

CRAFT EXHIBITS

Caswell Roger
Paris, KY
859.230.1527

CHAINSAW CARVERS:

TB Wooden Creations
Metamora, IN
Troy Baker
T: 765.338.7557

White Hills Carving Co.

Seymour, TN
Travis Plucinski
T: 203.410.0145

Sherri Corn

North Manchester, IN
T: 765.460.7304

Timbercrafts

Seymour, CT
Tim Bonney
T: 203.231.1232

Derek Richardson Chainsaw Art

Derek Richardson
Brandenburg, KY
T: 270.945.5028

Fundi Universe

Lexington, KY
Kiptoo Tarus
T: 859.551.7708

FOOD TRUCK VENDORS:

Double R SmokeHouse

Williamsburg, KY
Beth Rowe
T: 606.215.6394

Bluegrass Foods

Frankfort, KY
Richard Christy
T: 502.682.3488

Hippe Tom Concessions

Lexington, KY
Tom Lester
T: 502.603.9481



More information & contact:
www.sawmills4us.com

SERRA

sawmills4 **NOW**
WITH FULL
NORTH AMERICAN SUPPORT

offers unique engineering .mobile .stationary .worldwide

Powerful sawmills - made in Germany

For over 30 years our company has been well known for our high quality sawmills "Made in Germany". Today the unique SERRA technology is successfully being used in 80 countries worldwide. From a small mobile sawmill up to a complete industrial sawmilling line.

Horizontal band sawmills are the core competence of SERRA. Four different sizes are available. Allowing you to mill logs with a maximum diameter of 36", 43", 52" or even 64", mobile and stationary, using saw blades from 3" - 6" in width.

From the machine to saw blade service

Through its offices in Salt Lake City/UT and Spring Hill/TN, WINTERSTEIGER can offer you a complete package customized to your unique requirements including sawmills, resaws, saw blades, and service.

Part of
WINTERSTEIGER
Group

STEAM & HOT WATER

BOILERS

GAS | OIL | COAL | BIOMASS

 **HURSTBOILER.com**



**COME SEE US AT
BOOTH 17 & 18**



■ HYBRID

Available in Steam or Hot Water, Multi-Pass Dry Back Design. 100 to 3,000 BHP, 15 to 900 PSI Steam with Super Heater.

■ N65

Available in Steam or Hot Water, Firebox Design 100 to 1,500 BHP, 15 to 450 PSI Steam



■ DOM

The Hurst Dual-Tank Oxy-Miser "DOM" series boiler feed system is a spray-type Deaerator and condensate surge tank packaged together as a single unit sharing a common stand and pump header.



HURSTBOILER

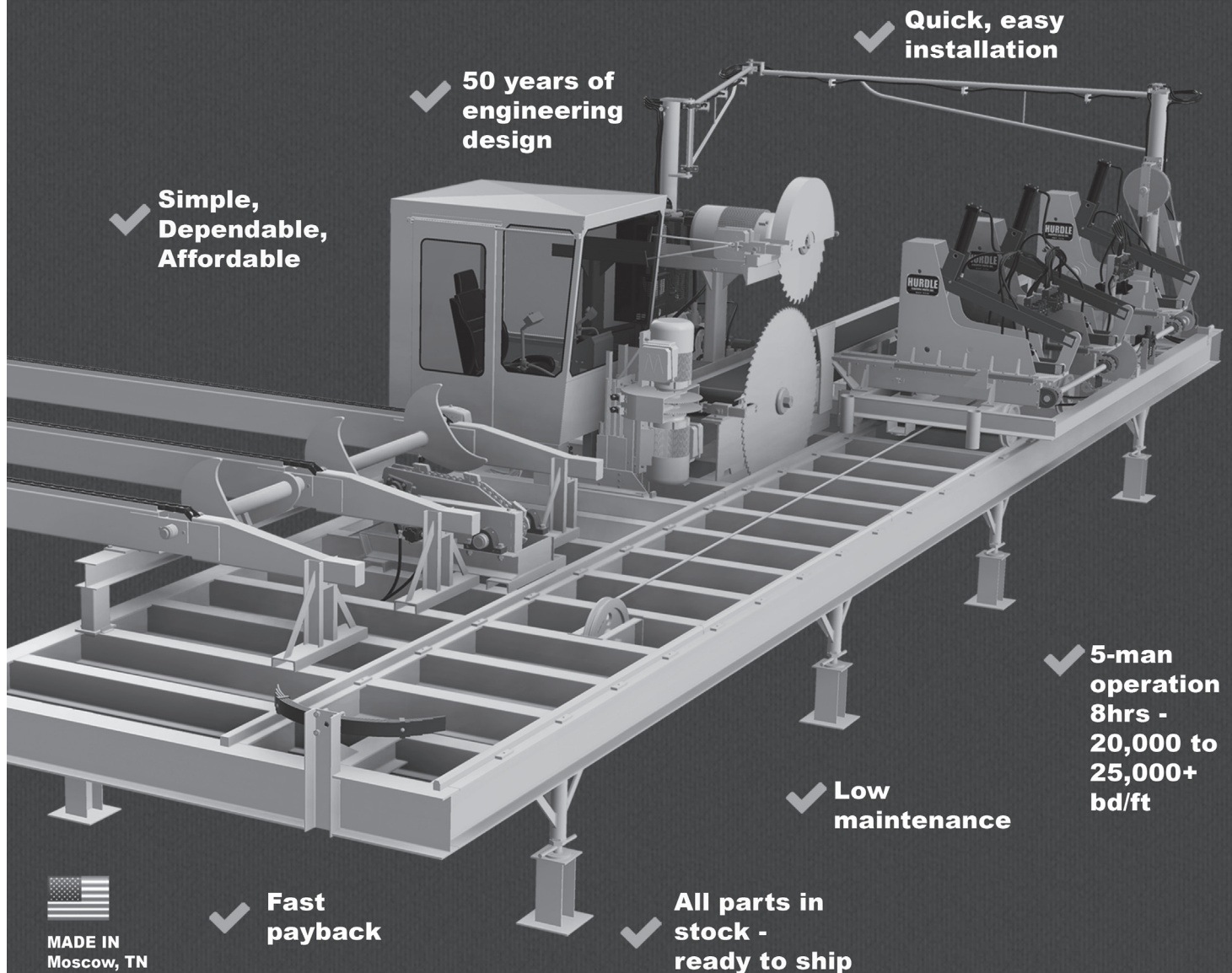
100 Boilermaker Lane • Coolidge, GA 31738-USA

Tel: (229) 346-3545 • Fax: (229) 346-3874

email: info@hurstboiler.com



Solid production without breaking the bank



3-week build time! Take advantage of hot markets without taking on massive debt.



YouTube www.youtube.com/HurdleMachineWorks



www.hurdlemachineworks.com



www.facebook.com/HurdleMachineWorks



CALL US NOW!

901.877.6251

WELCOME TO OUR NECK OF THE WOODS.

Worldwide forestry leader.
RUN JOHN DEERE, AND OUTRUN ANY CHALLENGE



Excavators



Wheel Loaders



Swing Machines



Dozers

Reach. Harvest. Deliver. Renew.

As the world's leading engineer and manufacturer of forest machines, John Deere offers a comprehensive line of machines for road building, harvesting, extraction, loading, and reforestation. Meade Tractor & John Deere are committed to forestry's future.



Tracked Harvesters



Skidders



Knuckleboom Loaders



Wheeled
Feller Bunchers

MeadeTractor.com

Locations Serving Kentucky & Tennessee

Kingsport, TN • Knoxville, TN • Chattanooga, TN • LaVergne, TN • Bowling Green, KY
Louisville, KY • London, KY • Georgetown, KY • Harlan, KY • Hazard, KY



JOHN DEERE